

Building to grow



TAWAH educates women in construction skills and techniques to build adequate shelters for marginalised communities in Tanzania. It enables women to earn a certificate leading to job opportunities while supporting their communities. Together with the Julius Baer Foundation and its network, TAWAH was able to develop its budding initiative during the first four years and is now increasing its impact thanks to professionalised business planning support and partnerships enabled by the Foundation and its client engagement.



This narrative, based on real events – with the names of the protagonists changed – tells the story of a powerful collaboration across the wealth divide and illustrates how alliances can amplify meaningful impact. The story takes place at the Mhaga Village in Tanzania, located two hours from Dar es Salaam in the town of Kisarawe.

Asha is a programme participant whose life changes fundamentally thanks to TAWAH. She is a single parent and faces the difficult but common challenge of raising her family while managing the farm alone. Despite traditional expectations placed on women, she embarks on a transformative journey of education with TAWAH.



Maua is the co-founder and executive director of TAWAH and manages its development and growth. Maua is passionate about helping communities in need through her knowledge and expertise in architecture. Connecting with Prof. Hargrove for expertise and guidance in TAWAH's business development has made the organisation stronger and created new opportunities.



Prof. Edward Hargrove is a professor at a renowned international business school and a client of Julius Baer. Together with his students, he visited TAWAH to collaborate on how to improve the project's growth. Through their work in Tanzania, the students devised a business plan for the coming five years. Prof. Hargrove is a committed and steadfast source of support. His experience and network are invaluable for the advancement of the project.



Sofia is the programme manager of the Julius Baer Foundation. She acts as a sparring partner to Maua and connected Mrs. and Prof. Hargrove with TAWAH for collaboration. She feels less like a donor and more like a partner to TAWAH, enabling knowledge transfer and connections where needed.

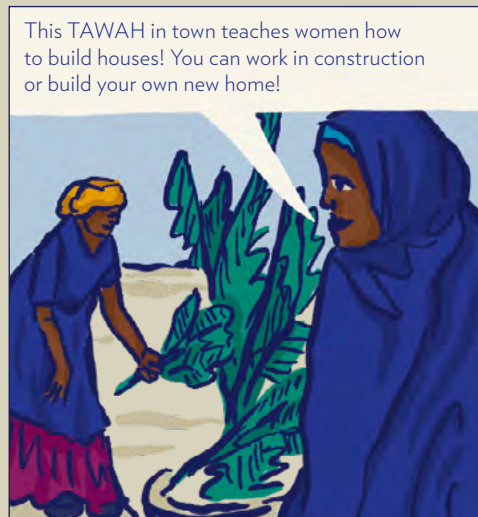


Caroline is a student in Prof. Hargrove's class and visits TAWAH through the MBA programme. While initially interested in advancing her own career through her MBA, the TAWAH visit is an eye-opener to her, inspiring her to stay connected.

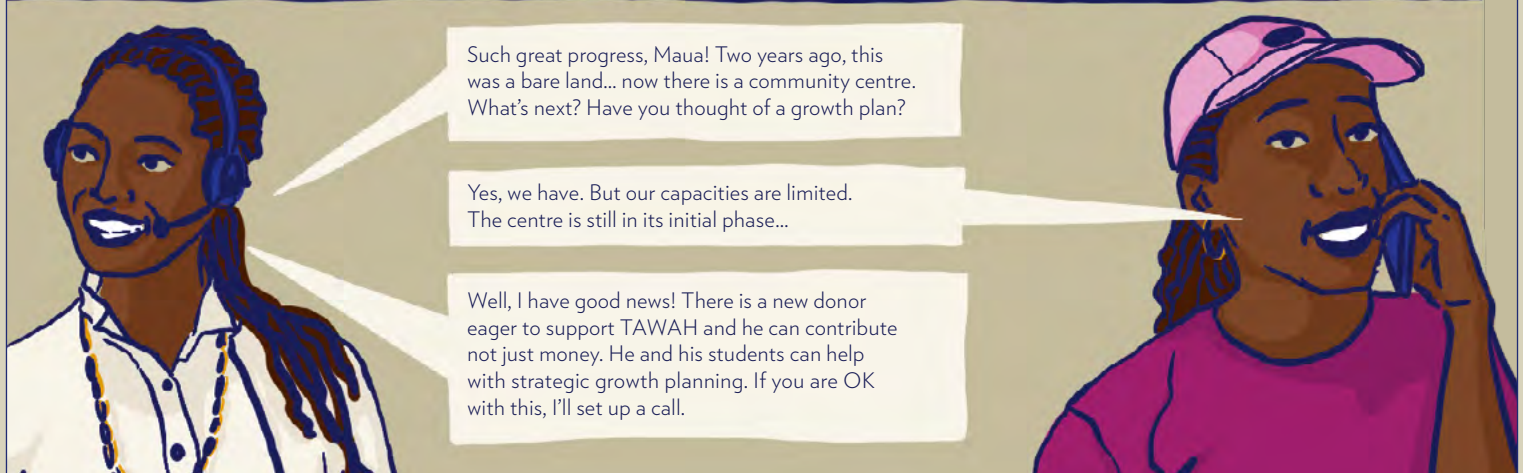


Learn more about TAWAH
wealth-inequality.net/project-tawah

MAUA EXPLAINS TAWAH'S EDUCATION OPPORTUNITIES FOR WOMEN AT A MHAGA VILLAGE GATHERING.



MEANWHILE, SOFIA FROM THE JULIUS BAER FOUNDATION AND TAWAH'S CEO MAUA EXCHANGE ON TAWAH'S STRATEGIC GROWTH PLAN.



Such great progress, Maua! Two years ago, this was a bare land... now there is a community centre. What's next? Have you thought of a growth plan?

Yes, we have. But our capacities are limited. The centre is still in its initial phase...

Well, I have good news! There is a new donor eager to support TAWAH and he can contribute not just money. He and his students can help with strategic growth planning. If you are OK with this, I'll set up a call.

AT AN INTERNATIONAL BUSINESS SCHOOL IN SWITZERLAND, PROF. HARGROVE SPEAKS TO HIS STUDENTS.

This year's MBA international consulting programme will take us to Tanzania.

We will support TAWAH who had a great start. Together we shall devise a growth plan for their next five years.

Interesting!



THE NEXT DAY



BACK AT THE BUSINESS SCHOOL
IN SWITZERLAND



We will do a strategic plan for this NGO in Tanzania. I'm really curious!



How is that ever going to help you in your career?

Different contexts force you to think outside the box. I like the challenge! Our professor talked very favourably about it.

A FEW MONTHS LATER, AT THE
TAWAH TRAINING CENTRE



Bye, mum!



I've never done roof work

I don't think I can go up there in this.

How are we supposed to do this?



Wanawake, jeshi kubwa*, I have exciting news



Tomorrow, a group of students and their professor from Switzerland will come to work with us. We are builders and architects, they are business consultants. Together, we can grow TAWAH.

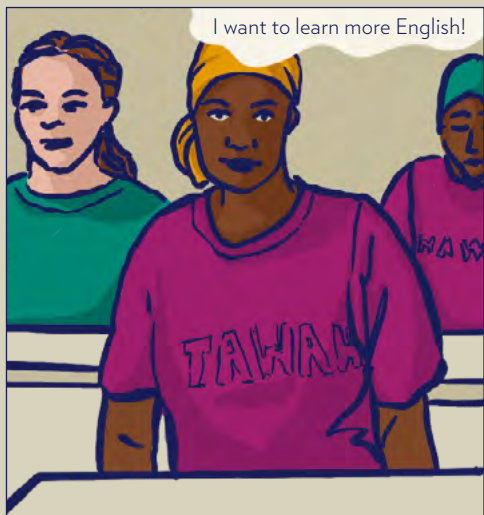
* Women are a great force (common greeting with women at TAWAH)



Mhaga village is getting so known!

They are coming from so far just to get to know TAWAH!

How are we going to talk to them?



A FEW MONTHS LATER AT THE COHORT'S GRADUATION CEREMONY
IN FRONT OF THE NEW HOUSE THEY BUILT



Congratulations! Can't wait to have you as our supervisor next week!



Dear graduates and friends of TAWAH, together we have managed to devise our TAWAH roadmap for the coming years. And connect with additional potential funders! I am excited about the future.



BACK IN SWITZERLAND AT THE BUSINESS SCHOOL

